

SWANBROOK JUDD L160

Animal ID EERL160
Date of Birth 01/09/2015
Sex Male
Status Active
Colour Black
Register HBR
DNA Profile Stored No profile is stored
Parentage Verification DNA parentage verification has not been conducted
Genetic Conditions AMFU,CAFU,DDFU,NHFU

Sire: TE MANIA AMBASSADOR A134^{SV}
 Sire: TUWHARETOA REGENT D145^{PV}
 Dam: LAWSONS HENRY VIII Y5^{SV}
Sire: PARINGA JUDD J5^{PV}
 Sire: TE MANIA BERKLEY B1^{PV}
 Dam: STRATHEWEN BERKLEY WILPENA F30^{PV}
 Dam: STRATHEWEN IN FOCUS WILPENA B41^{PV}

Sire: YTHANBRAE HENRY VIII U8^{SV}
 Sire: SWANBROOK HENRY Z10^{SV}
 Dam: WATTLETOP S110[#]
Dam: SWANBROOK CASSIE G126[#]
 Sire: S S TRAVELER 6807 T510[#]
 Dam: SWANBROOK CASSIE C242^{SV}
 Dam: SWANBROOK A16^{PV}

Ownerships

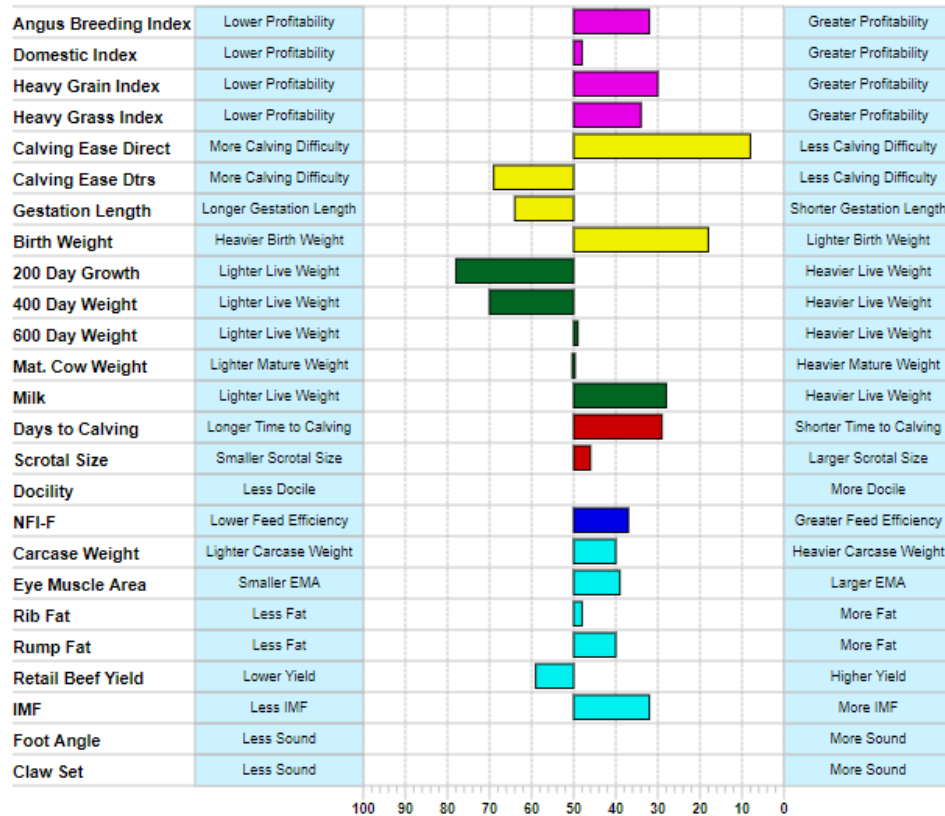
Type	Date	Member Id(s)	Trading Name(s)	Ownership
Birth	01/09/2015 –	EER	Swanbrook Angus	100%

February 2021 TransTasman Angus Cattle Evaluation

	Calving Ease				Growth					Fertility		Temp.
	Calving Ease Dir	Calving Ease Dtrs	Gestation Length	Birth Weight	200 Day Growth	400 Day Weight	600 Day Weight	Mat Cow Weight	Milk	Days to Calving	Scrotal Size	Docility
EBV	+9.1	+0.7	-3.7	+2.8	+43	+82	+114	+99	+19	-5.9	+2.0	-
Acc	56%	46%	84%	74%	70%	71%	74%	68%	62%	44%	63%	-
Perc	8	69	64	18	78	70	49	50	28	29	46	-

	Carcase						Feed Efficiency	Structural		Selection Index			
	Carcase Weight	Eye Muscle Area	Rib Fat	Rump Fat	Retail Beef Yield	IMF	NFI-F	Foot Angle	Claw Set	Angus Breeding Index	Domestic Index	Heavy Grain Index	Heavy Grass Index
EBV	+68	+6.4	-0.1	-0.1	+0.3	+2.4	+0.08	-	-	\$130	\$113	\$144	\$123
Acc	62%	62%	63%	63%	60%	59%	52%	-	-	-	-	-	-
Perc	40	39	48	40	59	32	37	-	-	32	48	30	34

Traits Observed: GL, CE, BWT, 200WT, 400WT, 600WT(x2), Scan(EMA, Rib, Rump, IMF)



SWANBROOK M73

Animal ID EERM73
Date of Birth 14/08/2016
Sex Male
Status Active
Colour Black
Register HBR
DNA Profile Stored No profile is stored
Parentage Verification DNA parentage verification has not been conducted
Genetic Conditions AMFU,CAFU,DDFU,NHFU

Sire: ARDROSSAN ADMIRAL A2^{PV}

Sire: HIDDEN VALLEY COMMANDO D138^{PV}

Dam: HIDDEN VALLEY GAMMER Z11^{PV}

Sire: AYRVALE GENETIC G11^{PV}

Sire: TE MANIA BARTEL B219^{PV}

Dam: AYRVALE JEDDA E2^{PV}

Dam: EAGLEHAWK JEDDA B32^{SV}

Sire: B/R NEW DESIGN 036[#]

Sire: B/R NEW FRONTIER 095[#]

Dam: WHITE FENCE PRIDE H1[#]

Dam: SWANBROOK DONNA C320^{SV}

Sire: YTHANBRAE THE DON W57[#]

Dam: BEJEMA DONNA Z19[#]

Dam: PEN-KERRI V19[#]

Ownerships

Type	Date	Member Id(s)	Trading Name(s)	Ownership
Birth	14/08/2016 –	EER	Swanbrook Angus	100%

February 2021 TransTasman Angus Cattle Evaluation

February 2021 TransTasman Angus Cattle Evaluation													
	Calving Ease				Growth					Fertility		Temp.	
	Calving Ease Dir	Calving Ease Dtrs	Gestation Length	Birth Weight	200 Day Growth	400 Day Weight	600 Day Weight	Mat Cow Weight	Milk	Days to Calving	Scrotal Size	Docility	
EBV	+3.6	-2.7	-4.2	+3.2	+43	+80	+106	+80	+16	-4.9	+1.5	-	
Acc	54%	46%	64%	73%	68%	65%	66%	64%	63%	43%	60%	-	
Perc	42	89	55	25	80	74	70	84	53	46	70	-	
Carcase													
	Carcase						Feed Efficiency	Structural		Selection Index			
	Carcase Weight	Eye Muscle Area	Rib Fat	Rump Fat	Retail Beef Yield	IMF	NFI-F	Foot Angle	Claw Set	Angus Breeding Index	Domestic Index	Heavy Grain Index	Heavy Grass Index
EBV	+50	+1.8	-1.4	-1.3	+0.3	+2.1	+0.19	-	-	\$111	\$106	\$119	\$107
Acc	63%	60%	64%	61%	62%	60%	54%	-	-	-	-	-	-
Perc	93	97	85	73	59	43	52	-	-	69	69	62	74
Traits Observed: BWT,200WT,400WT(x2),600WT(x2),Scan(EMA,Rib,Rump,IMF)													

